

User's Manual

USB TO RS-232 CONVERTER

Overview

Universal Serial Bus (USB) port technology has emerged in response to the proliferation of external peripheral devices (scanner, digital camera, portable hard-disk drive, cell phone, PDA, MP3 player, etc.) that are increasingly being connected to the latest generation of PCs. The USB behaves in a similar fashion to conventional bus ports like Serial (COM), Parallel and PS/2. As it doesn't require any IRQs, more devices can be attached to the system without conflicts.

This USB to Serial converter provides an external plug-and-play connection for RS-232-enabled devices with PC or any computerizing devices that support the USB specification. The converter comes with the standard connectors of Serial DB-25 or DB-9 and USB Type A or B to fulfill your working requirements. With the link of USB to Serial cable, communication starts interacting without any barriers.

For further convenience, this product is designed to work by using the power drawn from the Universal Serial Bus and no external power is required. As it is an USB compliant device, features of plug and play, hot-swapping, energy-saving suspend, and resume are provided.

Since the most computers have limited USB and COM ports, USB hubs can be employed to gain more USB ports for numerous USB peripheral devices to be connected up with your PC at the time.

System Requirements

- Windows 98/SE/ME/2000/XP/Vista, Mac8.6 and higher, Linux.
- The system is equipped with USB Host Controller

Features

- Supports automatic handshake mode.
- Works with cellular phone, PDA, digital camera, modem, POS, and ISDN terminal adapter.
- Supports remote wake-up and power management.
- Frees your RS-232 ports for other uses.
- Plug and play and hot-swapping

Specification

Model		UMC-100	UMC-101	UMC-201	UMC-102	UMC-104
Chipset		FTDI				
Complies USB Version		USB Version 1.1				
Data Speed	USB	15/1.2 Mbps				
	Serial	120 Kbps				
Connector	Upstream	USB B/F		USB A/M		USB B/F
	Device	DB-25/M*1	DB-25/M*1+ DB-9/M*1	DB-9/M*1	DB-9/M*2	DB-9/M*4
Power Mode		Bus				
Cable Length		1.8M	0.4M	1M	0.6M	1.8M
Housing		Plastic				Aluminum

Note for UMC-101: Device of DB-25 and DB-9 can not be operated at same time.

Driver Installation

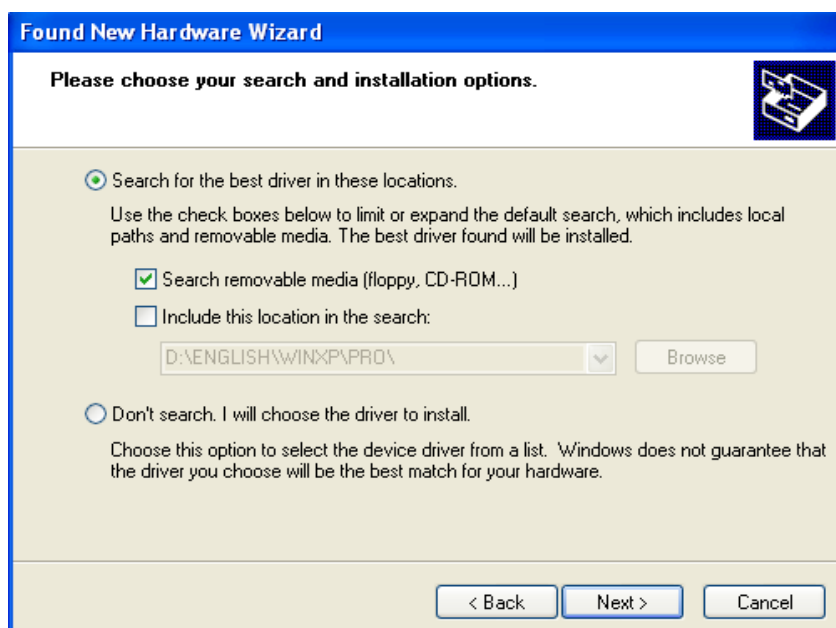
1. Please plug the USB to Serial converter into the USB port of PC first.
2. Insert the driver CD into the CD-ROM drive of your computer. The setup program will begin to run automatically.
3. If it's the first time you install the driver of USB to Serial device, you will need to install the driver twice. One is for the device under Universal Serial Bus Controllers, the other is for COMPORT.

You will be prompted by following screen dialogs to complete the work.

1. What do you want Windows to do?



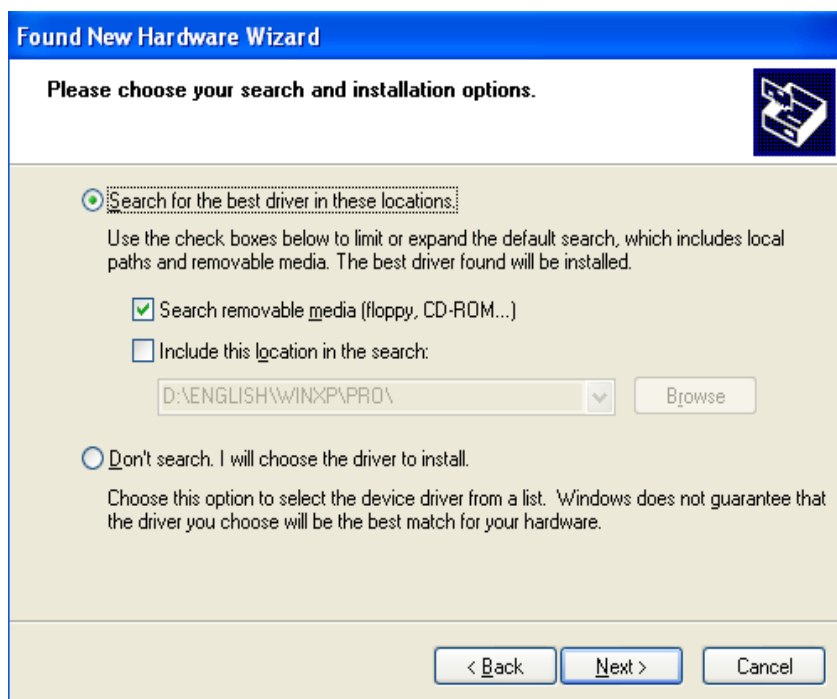
2. Searching locations for new driver



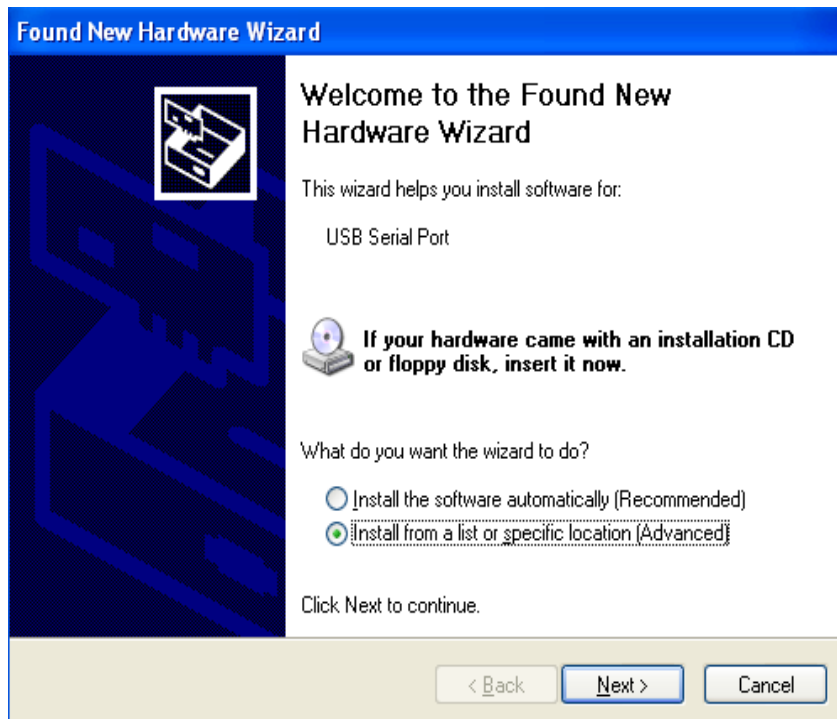
3. Windows has finished installing the software for USB Serial Converter



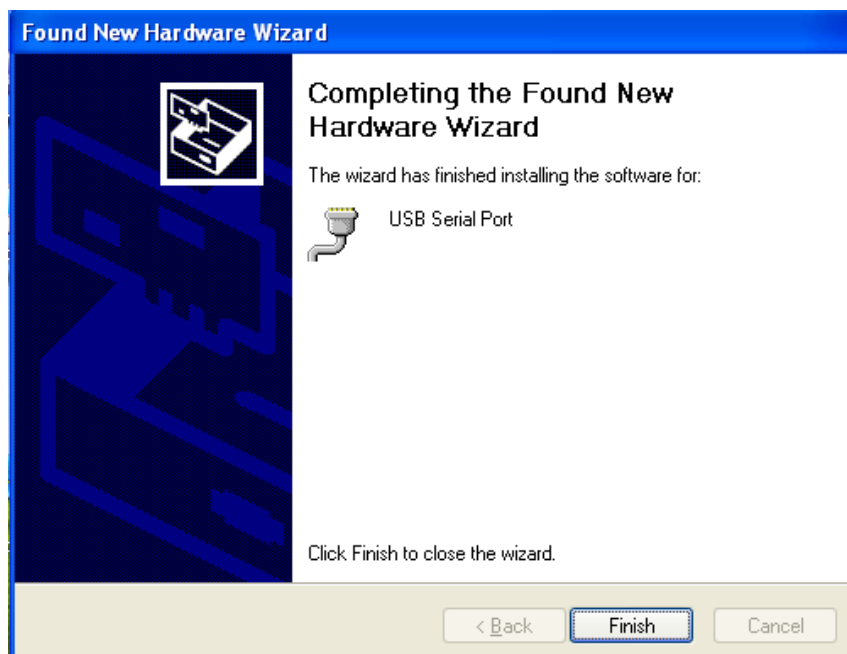
4. What do you want Windows to do?



5. Searching locations for new driver

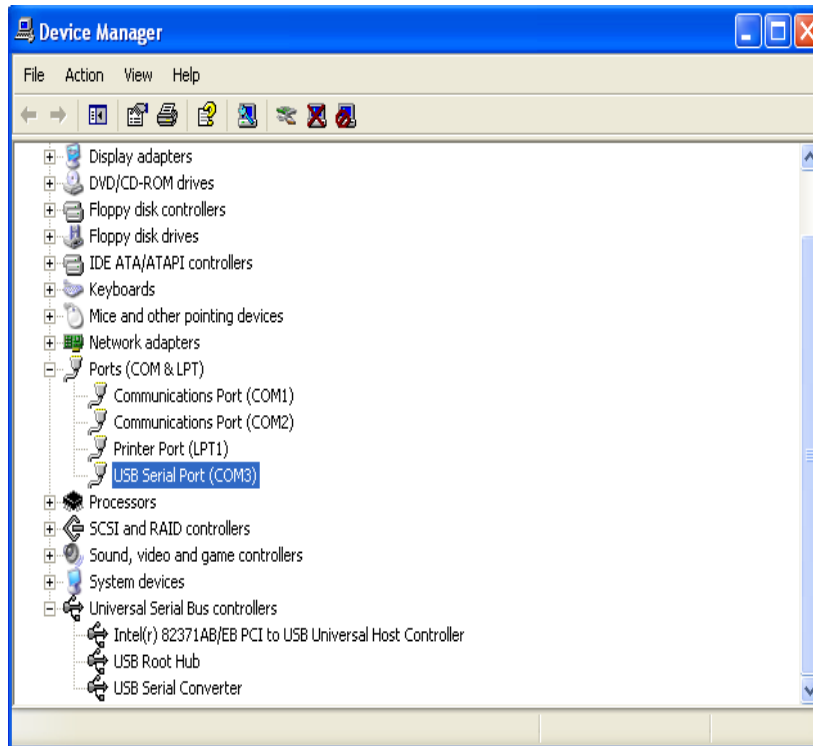


6. Windows has finished installing the software "USB Serial Port"



7. Make sure the driver installation is finished

Plug the USB to Serial device into the USB port of the computer then click " Start " -> " Settings " -> " Control Panel " -> " System " -> " Device Manager " to see if there are " USB Serial Port (COM3)" under Ports (COM) and "USB Serial Converter " under Universal Serial Bus controllers.



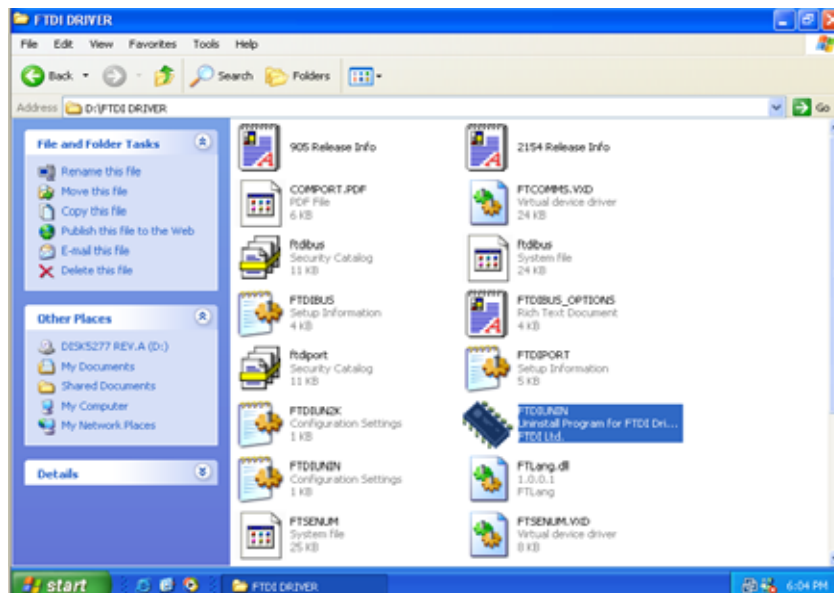
Please note:

1. For multiple-port converter, each port has to be installed with the driver individually, i.e. you have to repeat this installation procedure 2 times (2-port converter) or 4 times (4-port converter).
2. If you have any difficulties with the drivers we provided in this CD, you may download the updated or appropriate versions from FTDI Web site www.ftdichip.com/Drivers/VCP.htm, supported device "FT232BM".

Removal of Driver Software

Place the driver CD into the CD-ROM disk drive of the computer first then find and execute file "FTDI UNI N.EXE" by following steps:

1. Execute FTDI UNI N.EXE program



2. Unplug the converter device, click "Continue" to uninstall the drivers then click "Finish" to exit.

