

PC/SC Reader CR0522

Installation Guide v1.0



Easy to Insert

Plug & Play



TABLE OF CONTENTS

1	Software Installation	2
1.1	Driver Installation of (Windows 2000 / XP)	2
1.2	Driver Installation of (Windows98 / ME)	5
2	Hardware Installation	9
2.1	USB Interface Installation	9
3	Direction for IC Card Insert	10
4	LED Indicator	10

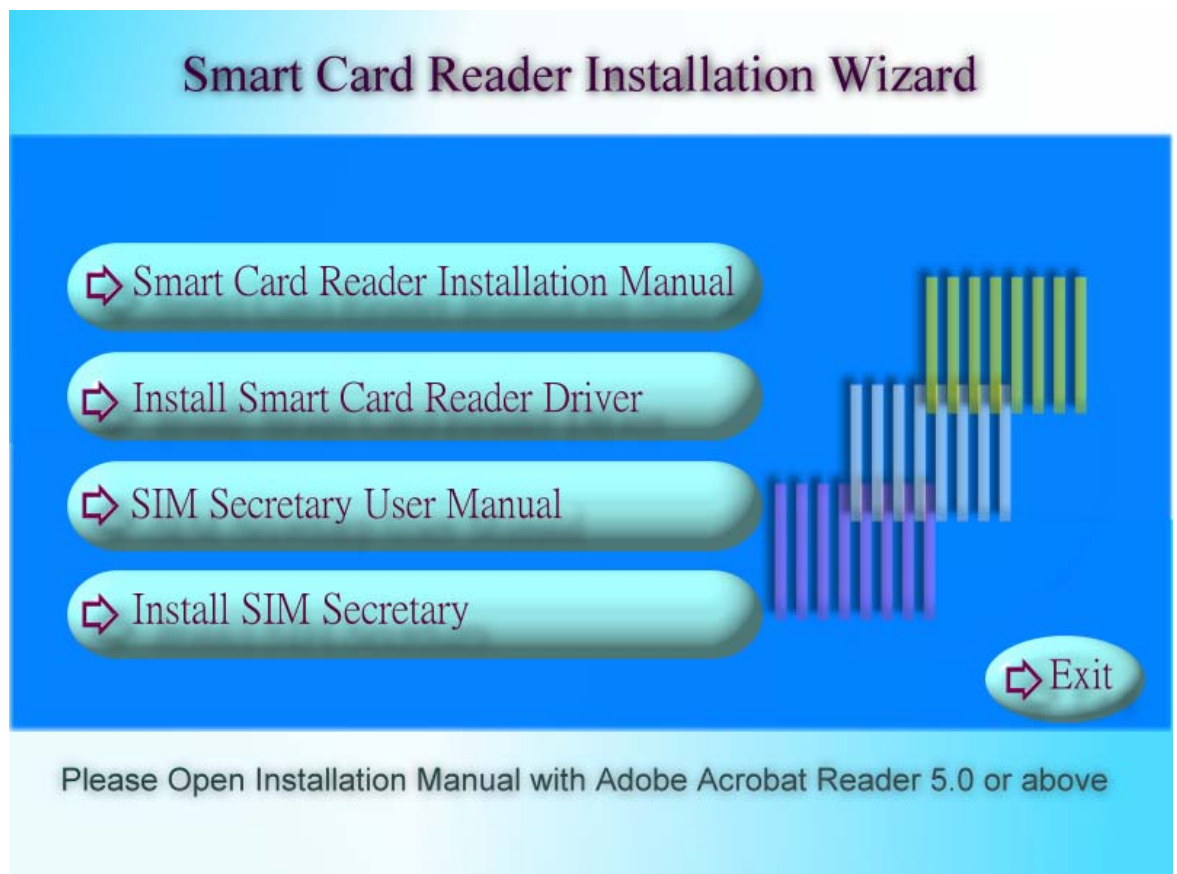
1 Software Installation

1.1 Driver Installation of (Windows 2000 / XP)

Windows XP user attention please , Click the "Cancel" button if the "Add New Hardware Wizard" dialog appears.

If you use the "Add New Hardware Wizard" to install driver , please run smcupdt.exe in smart card reader setup disc , File position is : CD-ROM \ Drivers \ CR0521 \ smcupdt.exe.

Step(1). Run smart card reader setup disc.



Step(2). Click “ Next “button to install smart card reader driver.

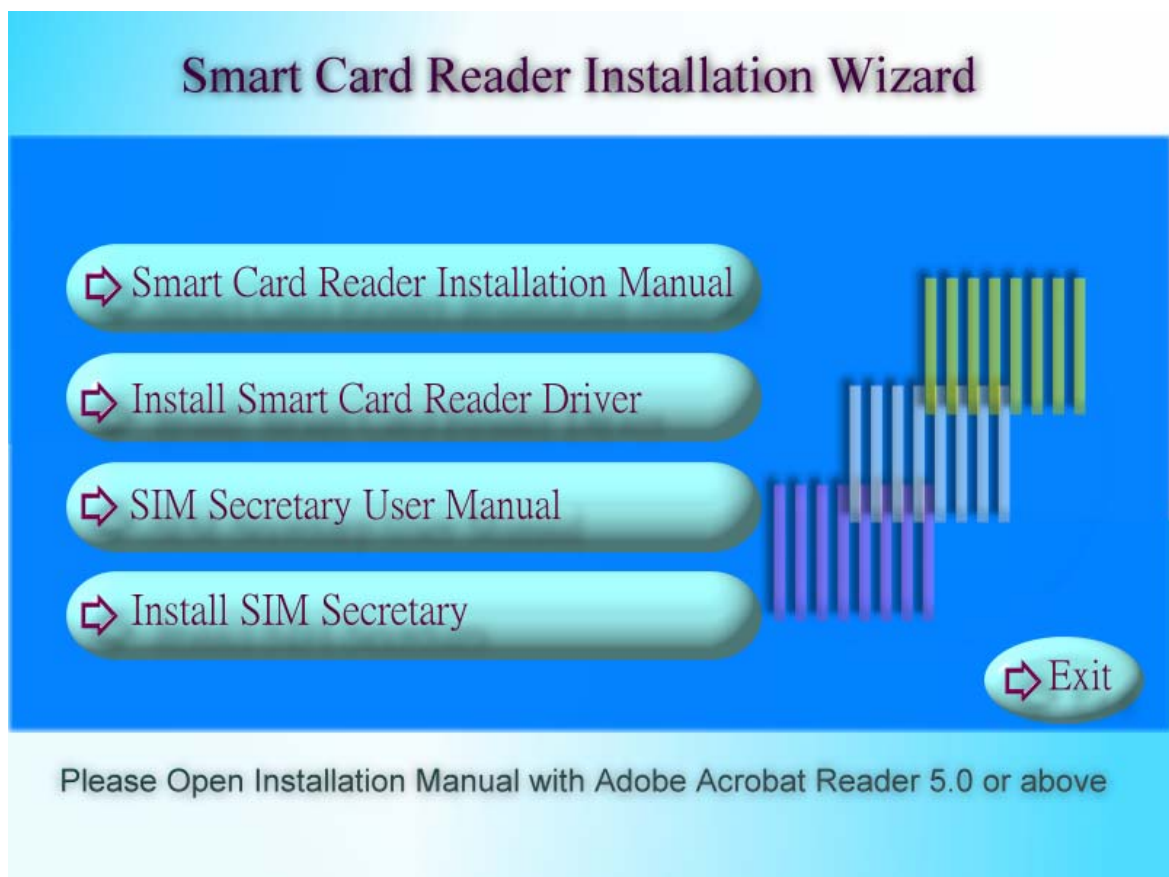


Step(3). Click “Finish” button to complete setup.

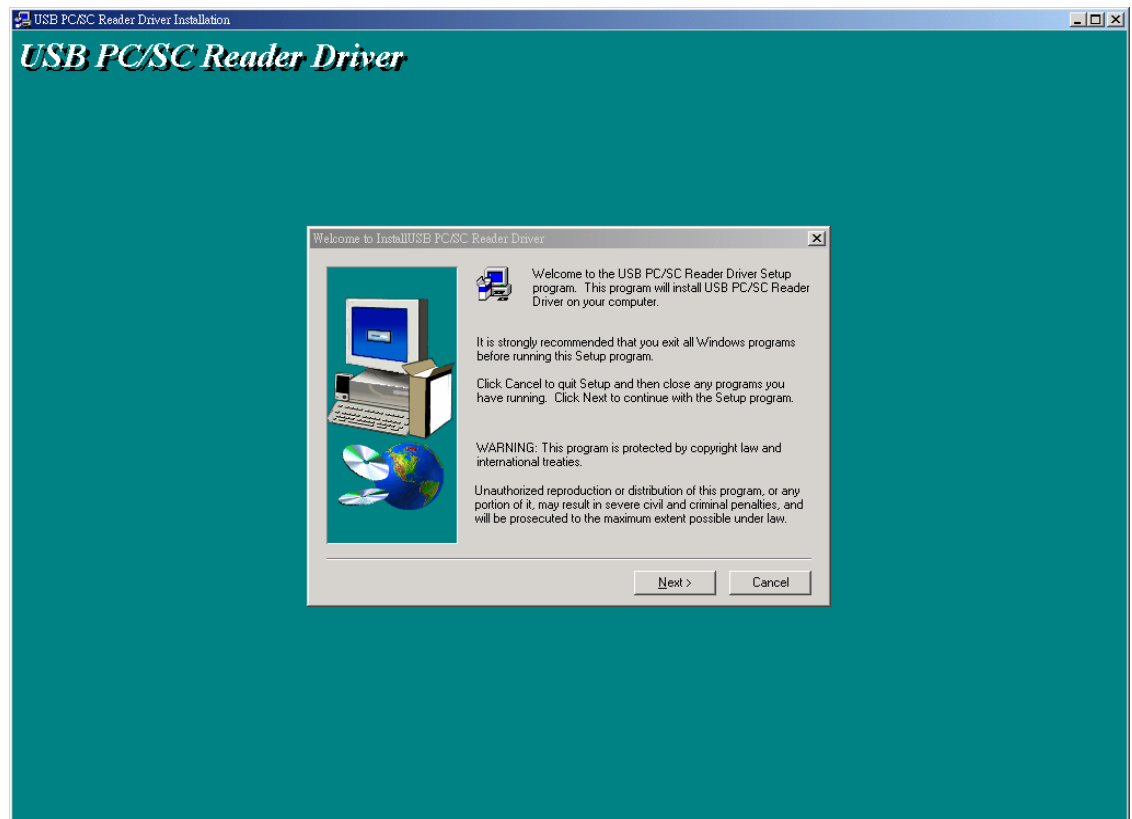


1.2 Driver Installation of (Windows 98 / ME)

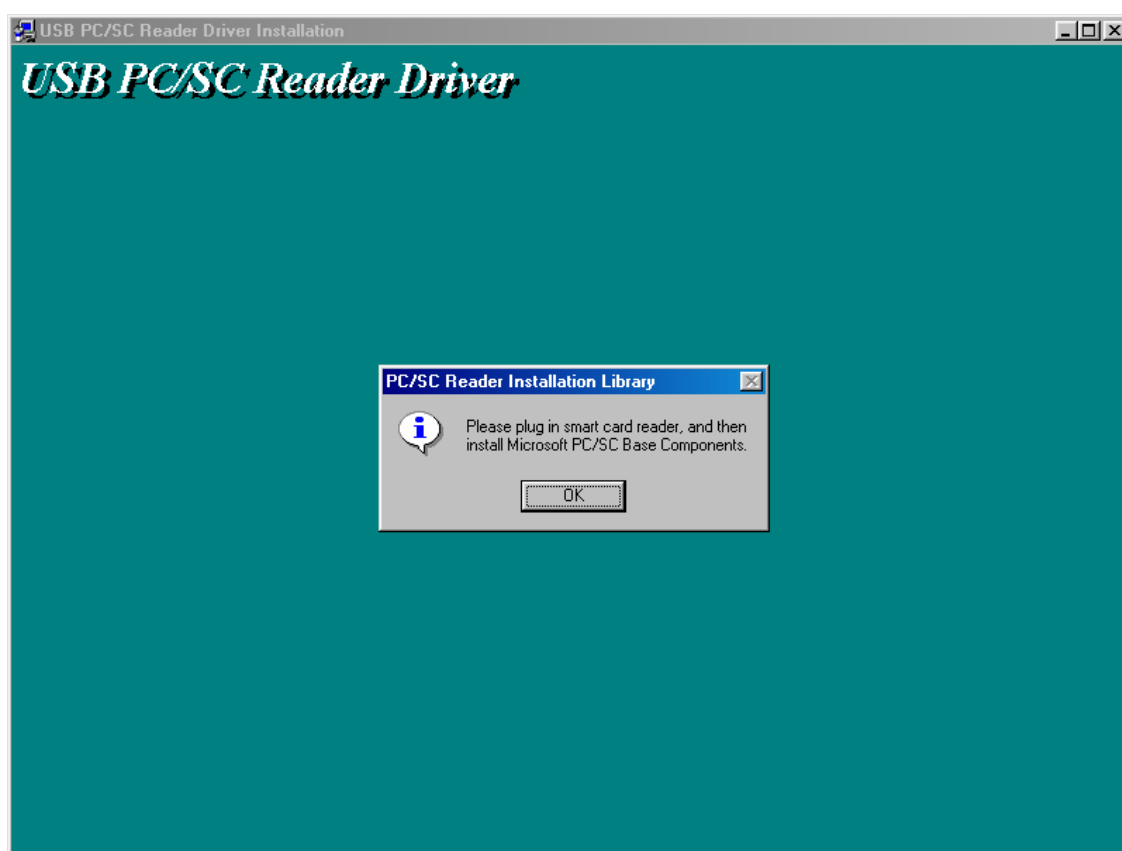
Step(1). Run smart card reader setup disk.



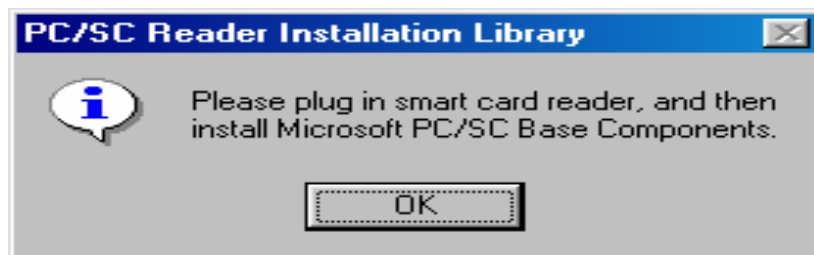
Step(4). Click “ Next “button to install smart card reader driver.



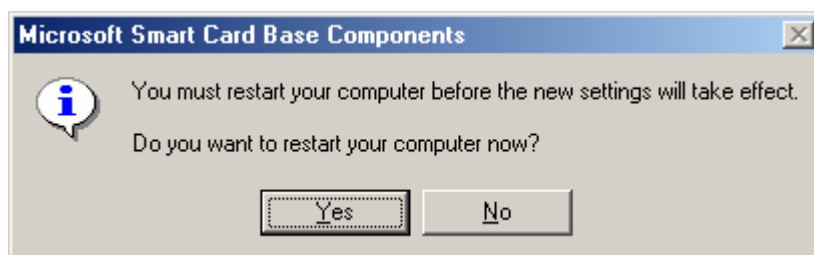
Step(2). Plug smart Card Reader USB connector into USB port.



Step(3). Click "Accept" button to install Microsoft Smart Card Base components.

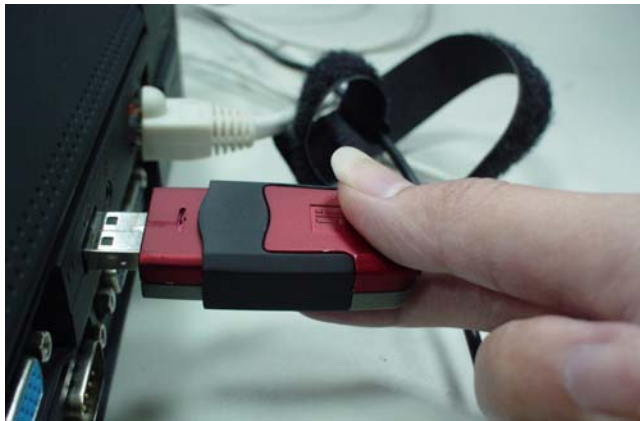


Step(4). Click "Yes" button to restart your computer.



1.3 Hardware Installation

Plug USB connector of Type A 4PIN into USB port of PC.



2 Direction for IC Card Insert

IC Card faces up and insert to Smart Card reader.



3 LED Indicator

Red Light : IC card insert to the wrong place or damaged of reader.
(No power of IC Card)

Green Light : IC Card has been reset. When green light is in flashing that
means IC Card is processing reading or writing.

Green Light : Reader power on.